

## Spare part list


Wire rope winch  
Typ LSF 200/1-15




**LIFTKET Hoffmann GmbH**

Dresdener Straße 64-68

04808 Wurzen / Germany

 +49-3425-89 24-0

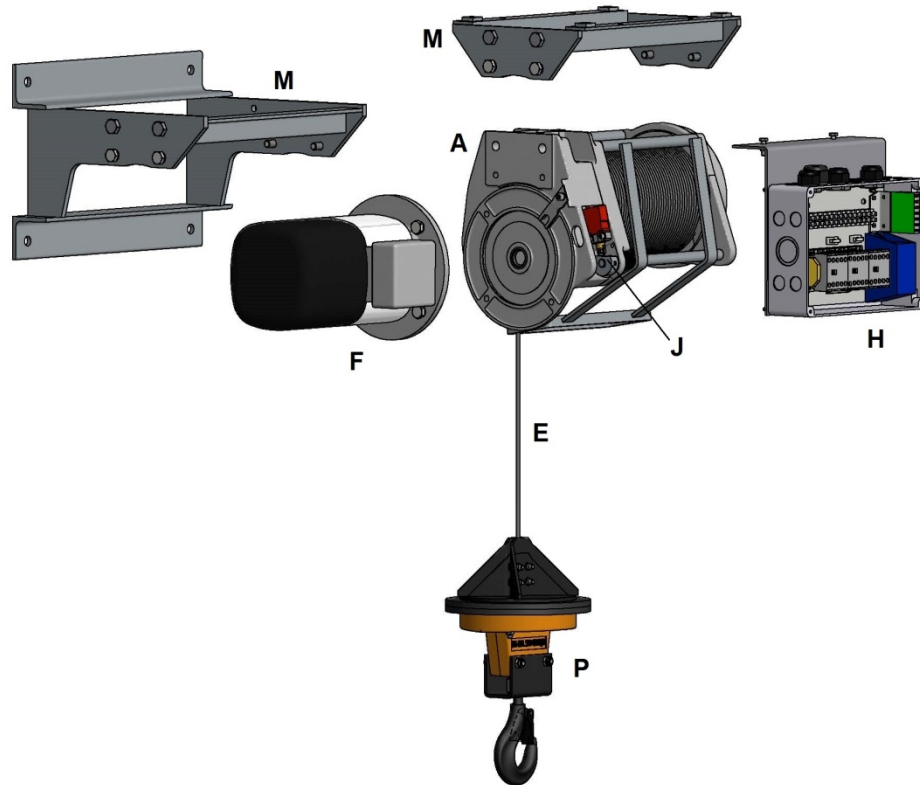
 +49-3425-89 24-99

 [sales@liftket.de](mailto:sales@liftket.de)

 [www.liftket.de](http://www.liftket.de)

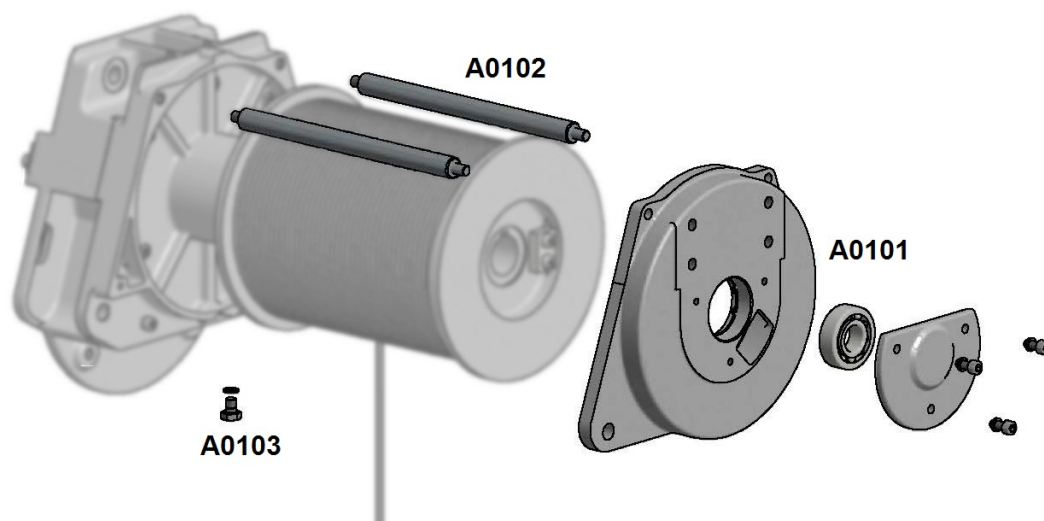
Ho 08/2017 englisch

## Overview



Code	Description	Page
A	Hoist body	4
E	Rope drum, wire rope	5
F	Motor	6
H	Low voltage control	7-9
J	Electric limit switch	10
M	Fastening accessories	11
P	Hook tackle	12
	Enquiry form spare parts	13

## A – Hoist body



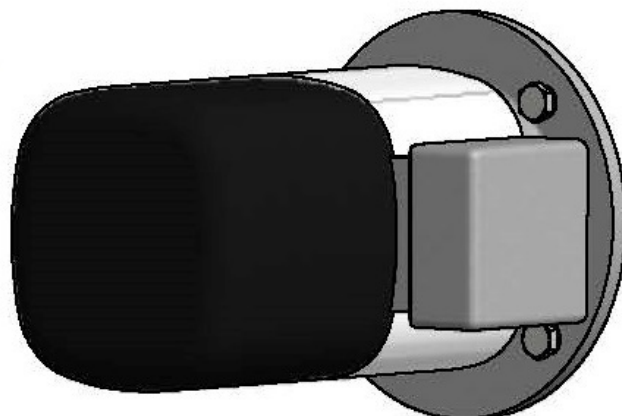
Code	Description	Version	Order number
A0101	rope drum bearing cpl.		06 9 30L 003/1
A0102	distance bolt		06 0 30L 017/0
A0103	oil draining screw cpl.		01 9 00A 201/0

## E – Wire rope



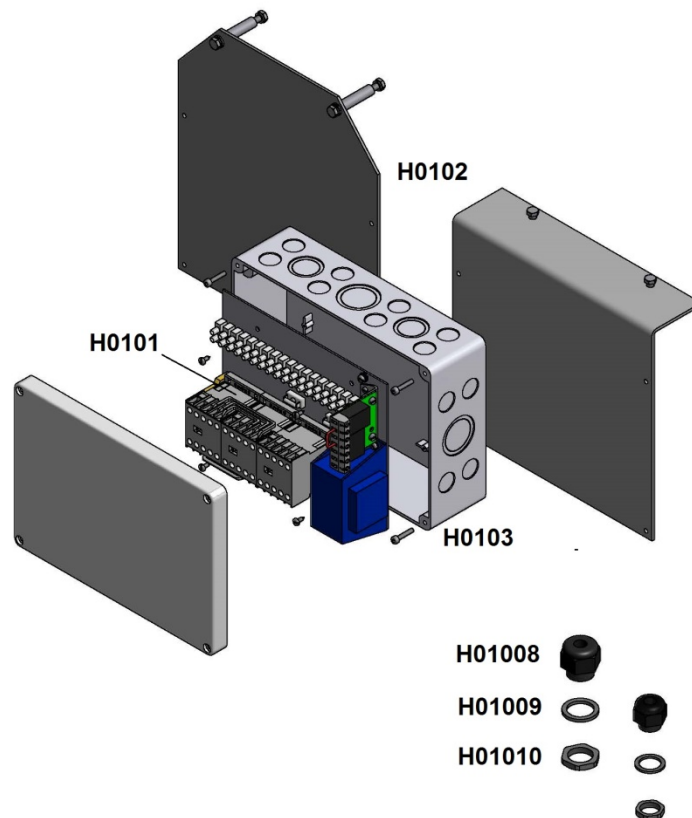
Code	Description	Version		Order number
<b>E01</b>	rope drum cpl.	66,5 m	to wound	06 2 30L 004/0 066
		81,5 m	to wound	06 2 30L 004/0 081
		86,5 m	to wound	06 2 30L 004/0 086
		91,5 m	to wound	06 2 30L 004/0 091
		101,5 m	to wound	06 2 30L 004/0 101
		121,5 m	to wound	06 2 30L 004/0 121
<b>E0101</b>	wire rope Ø 5mm	66,5 m	loose	18 03069 05066
		81,5 m	loose	18 03069 05081
		86,5 m	loose	18 03069 05086
		91,5 m	loose	18 03069 05091
		101,5 m	loose	18 03069 05101
		121,5 m	loose	18 03069 05121

## F - Motor



Code	Description	Version	Order number
F01	motor cpl.		42 2 080KY4 000/0
F0101	brake cpl.		17 9 30P 000/1
F0102	fan impeller cpl.		55 1B800 00001
F0103	fan cap cpl.		55 1B800 00002

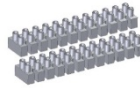
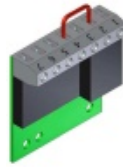
## H – Low voltage control



Code	Description	Version	Order number
H0101	low voltage control cpl.	with emergency stop	11 2 33L 001/0
H0102	holding plate cpl.	angle bracket	11 9 33L 002/2
		foot mounting	11 9 30L 002/1
H0103	control box		20 10000 00021
H01008	cable gland	M25 x 1,5/16	50 00400 25160
		M20 x 1,5	50 00100 M2015
H01009	flat seal	M25	50 00300 25001
		M20	50 00300 20001
H01010	locknut	M25 x 1,5	50 00300 25002G
		M20 x 1,5	50 00300 20002G


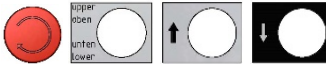
## Components

Code	Description	Version	Order number
H01001	rectifier		20 00040 00040F
H01002	contactor K1		74 3LC1K 91024
	contactor K2, K3		74 3LC2K 91024
H01004	transformer 230-400V/24V		88 00400 EI024
H01005	set terminal blocks		20 00000 00012
H01006	fuse holder		20 00060 00081
H01007	fuse	1,25 A	20 00060 00082


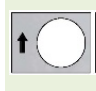





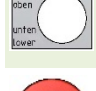











## Control pendant complete

Code	Description	Symbol / Function	Order number
H02	control pendant		81 A0100 000NH
			81 A0100 010NH

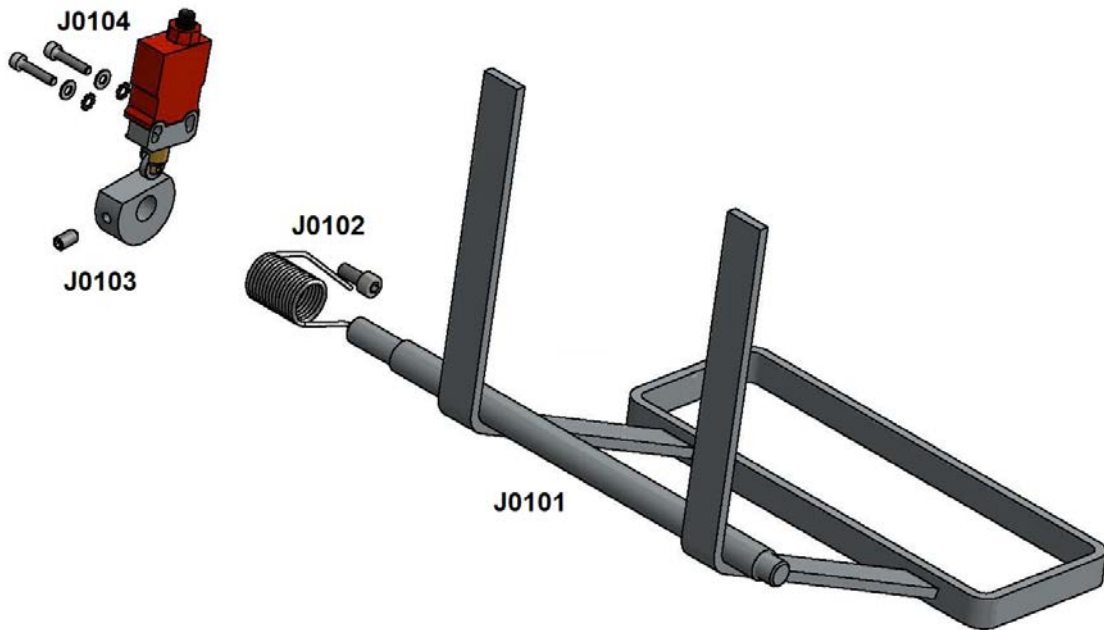
## Control pendant / Components

Code	Description	Symbol / Function	Order number
H0202	contactor blocks		81 ZB2BE 00101
			81 ZB2BE 00101
			81 ZB2BE 00101
			
			
			
			
			NO 81 ZB2BE 00101
			NC 81 ZB2BE 00102
			81 ZB2BE 00102
H0203	emergency stop button		81 ZA2BS 00834
H0204	rubber spare parts for buttons		
			white 81 XAC0A 09411
			black 81 XAC0A 09412

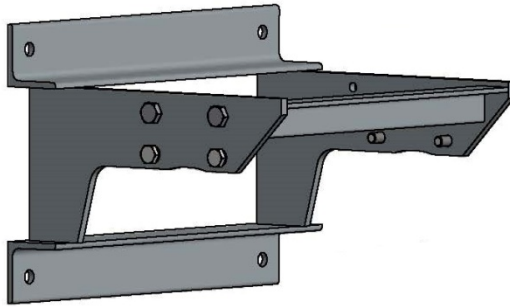
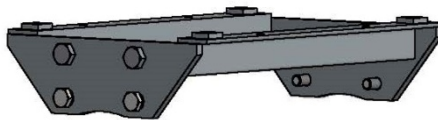
## Control pedant / Control cable

Code	Description	Symbol / Function	Order number
H0201	control cable		7G1,5 45 0YMH0 07G15
			7G1,5 45 0YMH0 07G15

## J – Electric limit switch



Code	Description	Version	Order number
J01	sub-assembly electric limit switch cpl.		46 9 30P 000/0
J0101	shift lever cpl.		06 2 30L 026/0
J0102	torsion spring cpl.		46 9 30P 032/0
J0103	cam for limit switch cpl.		46 9 30P 031/0
J0104	limit switch cpl.		46 9 30P 083/0

**M - Fastening****M01****M02**

<b>Code</b>	<b>Description</b>	<b>Version</b>	<b>Order number</b>
<b>M01</b>	angle bracket cpl.		06 9 31L 000/1
<b>M02</b>	foot mounting cpl.		06 9 30L 097/0

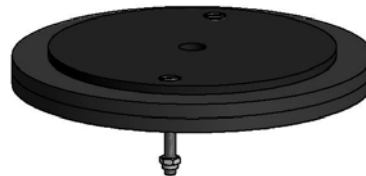
## P – Hook tackle



P01



P0105



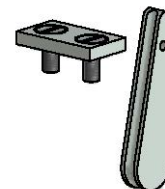
P0104



P0101



P0102



P0103

Code	Description	Version	Order number
P01	hook tackle cpl.	without buffer	16 2 30H 000/0
		with buffer	16 2 30P 000/0
P0101	upper part of hook tackle cpl.		16 9 30D 002/0
P0102	safety latch cpl.		20 9 020 50 003/0
P0103	rope termination cpl.		16 9 30D 009/0
P0104	buffer cpl.		16 2 31P 000/0
P0105	deflector cpl.		16 2 31P 010/1



